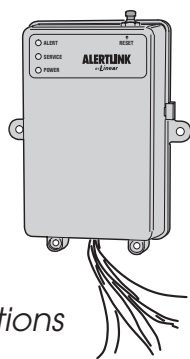


# AL-1

## Pull Cord Alert Link

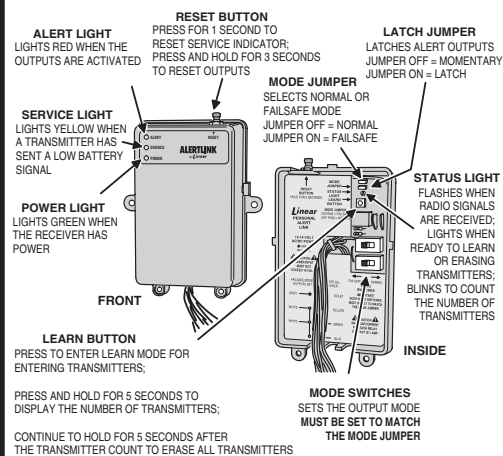
### Installation Instructions



**Linear**<sup>®</sup>

(760) 438-7000 • FAX (760) 438-7043  
USA & Canada (800) 421-1587 & (800) 392-0123  
Toll Free FAX (800) 468-1340  
www.linearcorp.com

### 3. COMPONENT LOCATIONS



### 6. CONNECT THE OUTPUTS

CONNECT THE OUTPUTS TO THE LOCAL CALL ANNUNCIATION SYSTEM

CONNECTIONS WILL VARY DEPENDING ON THE INSTALLATION

WIRE NUTS ARE SUPPLIED FOR MAKING CONNECTIONS

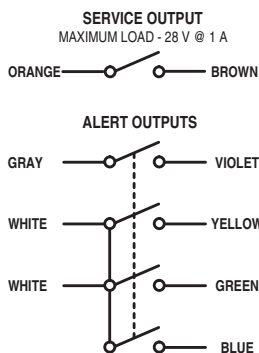
SERVICE RELAY LATCHES WHEN ONE OR MORE STORED TRANSMITTERS INDICATE A LOW BATTERY

A MOMENTARY OR LATCHED ALERT RELAY OUTPUT IS SELECTED BY THE "LATCH" JUMPER

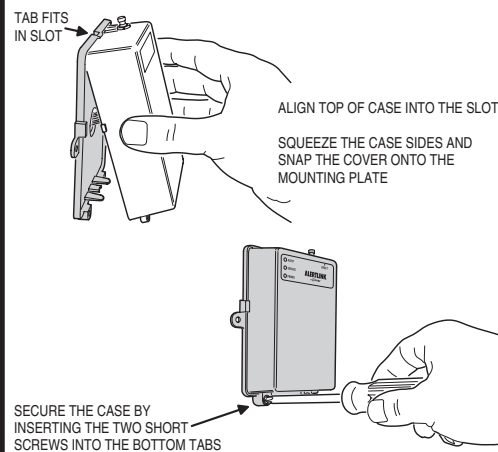
ON PINS - LATCH OFF PINS - MOMENTARY

**CAUTION**  
MAXIMUM CURRENT FOR EACH RELAY CONTACT IS 1 AMP

#### AL-1 OUTPUT WIRE COLORS



### 9. CLOSE AND SECURE THE CASE



### 1. PRODUCT DESCRIPTION

The Model AL-1 is a wireless personal alert receiver designed for use with existing nurse call annunciation systems. In a typical installation, the receiver is used in the place of, or in conjunction with, a standard pull cord to activate a corridor light, bed light, room light, and any audible devices to indicate the need for assistance. Up to 32 wireless transmitters can be programmed to activate each receiver.

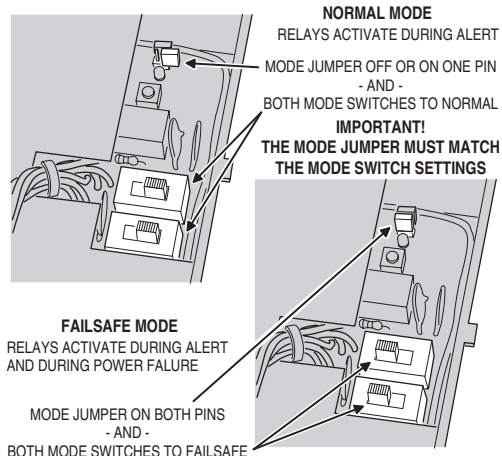
Three indicators on the front of the receiver display the system status. The green POWER indicator lights when power for the receiver is present. The yellow SERVICE indicator lights if a transmitter has sent a low battery signal. The red ALERT indicator lights when a transmitter has been triggered, showing that the receiver's outputs have been activated.

Pressing the RESET button on the top of the receiver for less than two seconds will reset any transmitter low battery indications. Pressing the RESET button for more than three seconds will clear the ALERT indication and reset the relay outputs if in the latched mode.

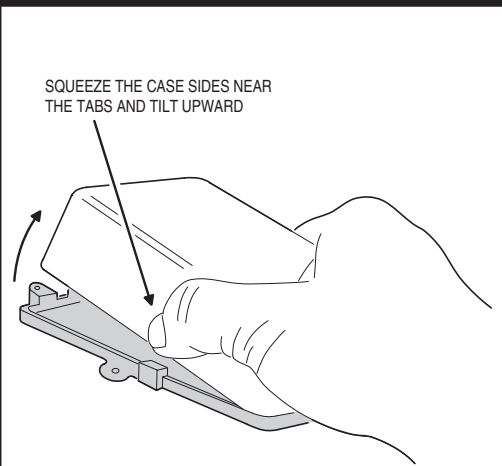
The receiver contains four normally open 1-amp relay contacts that close when activated. One relay provides an isolated output. The three other relays are isolated when open and have a common return. The receiver relays can operate in "normal" or "failsafe" mode. In normal mode, the relays will energize when the receiver is triggered. In failsafe mode, the relays are energized continuously until the receiver is triggered. Failsafe mode supervises the system by causing the outputs to activate if power is removed from the receiver. Both modes provide normally open outputs.

Power for the receiver is supplied by a plug-in transformer. The receiver can be mounted directly to a wall or to a single-gang electrical box with the hardware supplied.

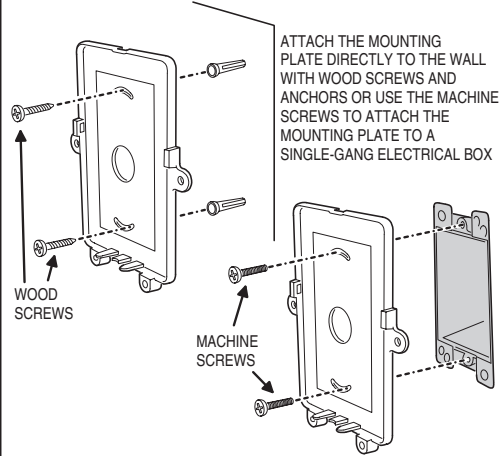
### 4. SET THE MODE



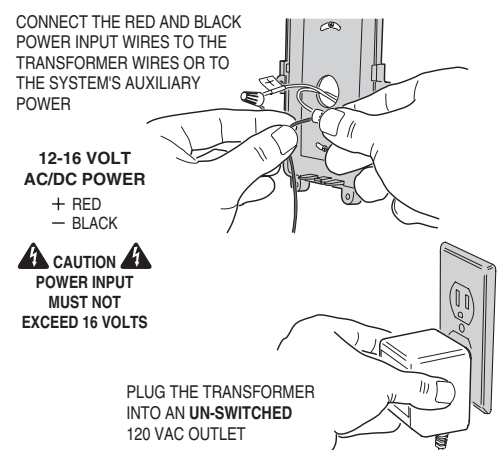
### 2. OPEN THE CASE



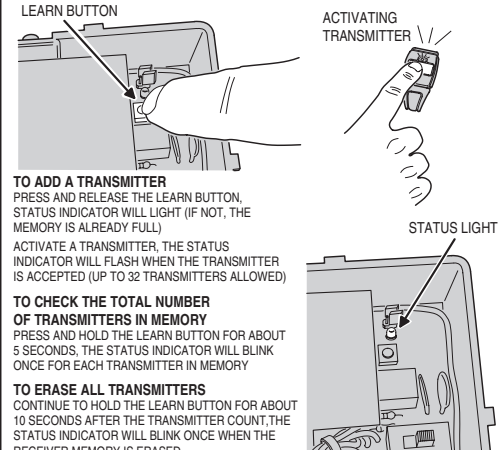
### 5. INSTALL THE MOUNTING PLATE



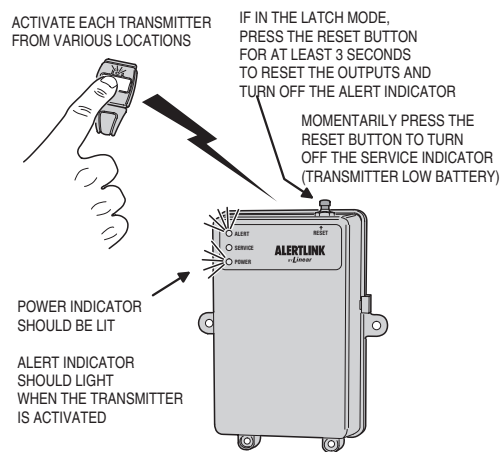
### 7. CONNECT THE TRANSFORMER



### 8. TRANSMITTER SETUP



### 10. SYSTEM TEST & OPERATION



### LINEAR LIMITED WARRANTY

This Linear product is warranted against defects in material and workmanship for twelve (12) months. The Warranty Expiration Date is labeled on the product. This warranty extends only to wholesale customers who buy direct from Linear or through Linear's normal distribution channels. Linear does not warrant this product to consumers. Consumers should inquire from their selling dealer as to the nature of the dealer's warranty, if any. There are no obligations or liabilities on the part of Linear Corporation for consequential damages arising out of or in connection with use or performance of this product or other indirect damages with respect to loss of property, revenue, or profit, or cost of removal, installation, or reinstallation. All implied warranties, including implied warranties for merchantability and implied warranties for fitness, are valid only until Warranty Expiration Date as labeled on the product. This Linear Corporation Warranty is in lieu of all other warranties express or implied.

All products returned for warranty service require a Return Product Authorization Number (RPA#). Contact Linear Technical Service at 1-800-421-1587 for an RPA# and other important details.

#### IMPORTANT !!!

Linear radio controls provide a reliable communications link and fill an important need in portable wireless signaling. However, there are some limitations which must be observed.

- For U.S. installations only: The radios are required to comply with FCC Rules and Regulations as Part 15 devices. As such, they have limited transmitter power and therefore limited range.
- A receiver cannot respond to more than one transmitted signal at a time and may be blocked by radio signals that occur on or near their operating frequencies, regardless of code settings.
- Changes or modifications to the device may void FCC compliance.
- Infrequently used radio links should be tested regularly to protect against undetected interference or fault.
- A general knowledge of radio and its vagaries should be gained prior to acting as a wholesale distributor or dealer, and these facts should be communicated to the ultimate users.